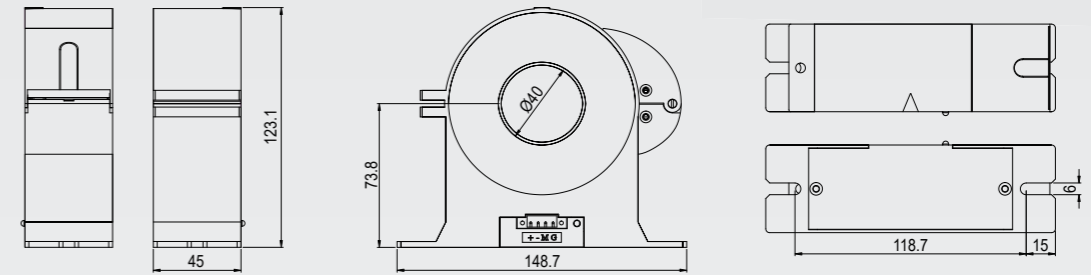
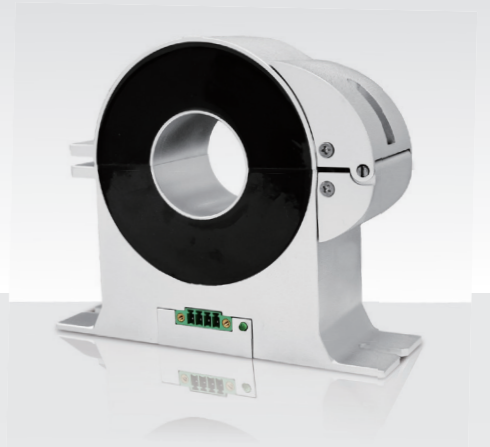


High-precision split core current sensor

CIT SERIES

CIT100~CIT1500



Product model	CIT100	CIT200	CIT400	CIT600	CIT1000	CIT1500
Primary rated DC current/ I_{PN_DC}	±100A	±200A	±400A	±600A	±1000A	±1500A
Primary rated AC RMS/ I_{PN}	70A	140A	282A	424A	707A	1060A
Primary overload current/ I_{PM}	±120A	±240A	±480A	±720A	±1200A	±1650A
Supply voltage/ V_c	±15V	±15V	±15V	±15V	±15V	±15V
Standby power consumption current/ I_{PWR}	±50mA	±50mA	±50mA	±50mA	±50mA	±50mA
Transformation ratio (primary: secondary)/ K_N	1000: 1	1000: 1	1000: 1	1000: 1	1000: 1	1000: 1
Rated output current/ I_{SN}	100mA	200mA	400mA	600mA	1000mA	1500mA
Accuracy/ X_G	0.05%	0.05%	0.05%	0.05%	0.05%	0.05%
Linearity/ ϵ_L	0.02%	0.02%	0.02%	0.02%	0.02%	0.02%
Bandwidth/BW(3dB)	350kHz	350kHz	350kHz	350kHz	350kHz	350kHz
Response time/ t_r	2μs	2μs	2μs	2μs	2μs	2μs
Current change rate/ di/dt	100A/μs	100A/μs	100A/μs	100A/μs	100A/μs	100A/μs
Zero offset current/ I_{0r}	±30μA	±30μA	±30μA	±30μA	±30μA	±30μA
Operating temperature/ T_A	-30°C~75°C	-30°C~75°C	-30°C~75°C	-30°C~75°C	-30°C~75°C	-30°C~75°C
Installation method	Disc installation	Disc installation	Disc installation	Disc installation	Disc installation	Disc installation
Hole diameter	40mm	40mm	40mm	40mm	40mm	40mm
Weight	1050g	1050g	1050g	1050g	1050g	1050g